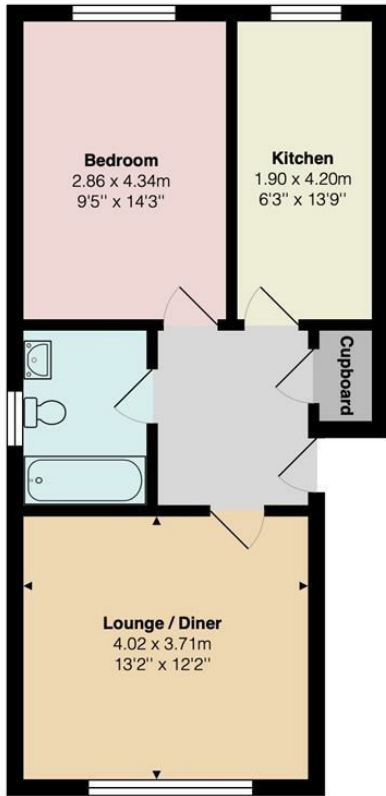




 1  1  1  C

75a Southcote Road, Bournemouth, BH1 3SH

Offers Over £145,000

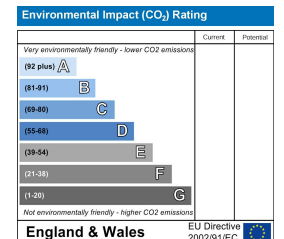
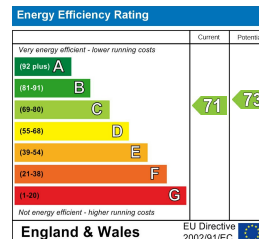
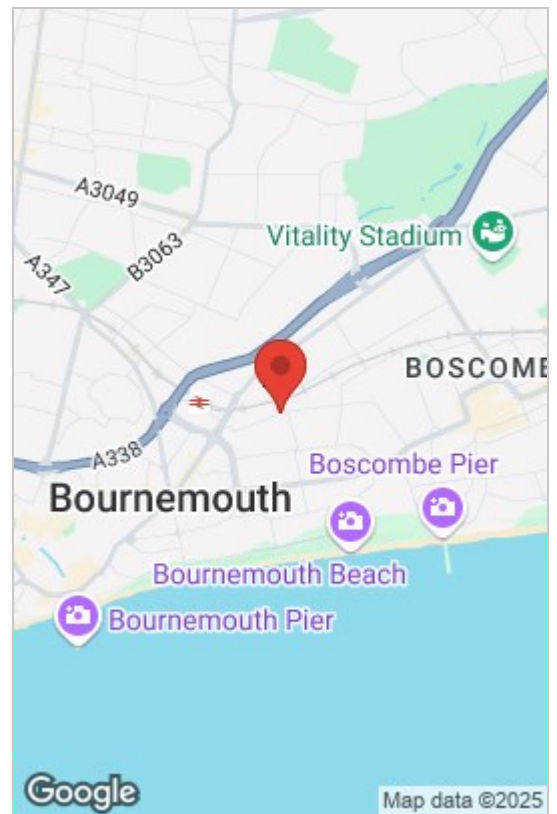


Total Area: 48.0 m² ... 517 ft²

All measurements are approximate and for display purposes only

- Just a short stroll to Bournemouth Centre, East Cliff with its beautiful beach and the main train station—perfect for commuters or those seeking a vibrant coastal lifestyle.
- Fantastic Investment opportunity offering a yield of circa 6.5%, or a great first step onto the property ladder.
- Separate kitchen with appliances and recently installed boiler.
- Dedicated parking space and private garage.
- A generously sized living area, ideal for relaxation and entertaining guests.
- Large bedroom with ample natural light.
- Family bathroom with shower over bath, pedestal basin and WC.
- Share Of Freehold. - Pet-friendly - subject to permissions, with No Onward Chain!

We are delighted to present this well-appointed one-bedroom First Floor Flat situated in a purpose-built development close to East Cliff, with its sandy beach and within easy reach of Bournemouth Town. Offered with NO CHAIN and a Share of Freehold making it an ideal home or investment opportunity returning circa 6.5% yield.



Whilst these details are thought to be correct, their accuracy cannot be guaranteed and do not form part of any contract. It should be noted that we have not tested any fixtures, fittings, equipment, apparatus or services, therefore we cannot verify that they are in working order or fit for purpose. Solicitors should be used to confirm that any moveable items described within these details are in fact part of the sale agreement. While we try to ensure measurements are correct they are not guaranteed and purchasers are advised to take their own measurements before ordering any fixtures or fittings.